

Who are we?



Life Management Solutions

We are a team of dedicated professionals who are passionate about building strong and stable families.

Our services are available through The Community Place of Greater Rochester.

For more information
contact Ruth Nieboer at 585-288-0021 or
RNieboer@communityplace.org



Life Management Solutions

"My 15 year old daughter was having problems with school attendance. Family Concepts showed us how my husband and I were shaping and forming the very behavior that we thought we were trying to stop. The program is an essential need in our County and every County." - Carrie



"Your program has been such a blessing to me and my family. It has also taught me how to be a better wife, a better mother and a better person. It is the ONLY program I know of that provides a range of programs for families. I have told so many co-workers, friends, and family members about this program. This is a program that I would suggest all families get involved in because it really works." - Phyllis

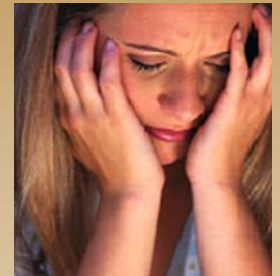


"We started Family Concepts thinking that this is all about our son and what we needed to do to help him. What we learned is it was all about ourselves as well, not just our son. And about the changes we needed to make as parents and as a family to help pull our family back together as did the other families that were in the program with us." - Dan

Is your youth self-destructing & pulling family apart?



Are you exhausted & without options?



Life Management Solutions

We're ready to help you and your family

2009 Model Program
National Association
of County
Organizations

“Bringing wholeness & restoration”

Listed below are 2008 statistics from Life Management Solutions in Henry County, Georgia...

- ❖ 99% participants successfully complete programs.
- ❖ 87% deterred from entering judiciary system
- ❖ 75% juvenile offenders who participate do not repeat offenses.
- ❖ 70% of youth who participate through gang related activities and/or referrals remove themselves from gangs.
- ❖ 95% of adults and parents who participate recognize and take ownership of poor decision making, emotional contamination, and overall dysfunction in the family unit.
- ❖ 98% of participants who were referred from Superior Court for Co-Parenting Resolution chose to stay married and chose to work on their marriage unit.
- ❖ 80% of youth and/or parents who have truancy related issues improve on school attendance.
- ❖ 80% of all participants choose to remain abstinent from drugs.
- ❖ 75% of youth commit to remain

Family Concepts

(Adults, Youth 7 years and older, Parents)

The most recommended 12-week program designed to strengthen the individual, youth, adults and family unit includes:

- ◆ Life, Family & Time Management
- ◆ Conflict Resolution
- ◆ Negative Behavior Identification
- ◆ Learning Self-Control
- ◆ Gang Awareness Intervention & Prevention
- ◆ Finance 101—the 8 qualities of wealth
- ◆ Dangers of MySpace
- ◆ One-on-One Family Management Plans
- ◆ Building Healthy Lifestyles
- ◆ In-Her Beauty Health, Body Awareness & Etiquette
- ◆ Baby Think It Over
- ◆ Effects of Out-of-Wedlock Pregnancy
- ◆ Building Healthy Marriages
- ◆ Building Healthy Relationships
- ◆ New York State Sex Law Education regarding youth and young adults under 21

Grandparents raising Grandkids

Help for grandparents &/or anyone who has guardianship of children or youth who are facing the challenges of raising grandchildren &/or children. Components include early childhood development stages, importance of stability and parental visitation (applicable), effective consistency and security in the home, etc. Seminars are held each month on Saturday. Please do not bring children to this workshop.

Gang Resistance Intervention (GRIP)

12-week program designed for parents and juvenile offenders who have gang-related activities &/or affiliations. Program components include: family management, why kids join gangs, effects of gang activity, parental responsibilities.

Co-Parenting Resolution Training

Helps parents prepare to effectively parent before, during and after divorce/separation, as well as assist in custodial/guardianship concerns. Seminars are held one time each month on Saturday.

Truancy Related Education

Designed for youth and parents who have truancy-related issues and/or parents who are challenged in providing effective educational reinforcement. Program Components includes, but is not limited to, social, financial, effects of truancy, family structure, educational neglect.

Back on Track Seminar

A seminar designed to assist adults, both offenders and non-offenders, get back on track in areas of personal adversity, finance, life management, goals and priorities.

YES Program

Designed for at-risk youth with shoplifting tendencies. Program held one Saturday each month from 9a.m. – 3p.m. Program includes a six-hour classroom component, as well as a home study kit that must be completed by class.

Additional Workshops

Family Management
Identifying Your Uniqueness

Overcoming Adversity
Dangers of MySpace

Life Management
Gang Awareness

Finance 101
Career Day

*Contact Ruth Nieboer at 585-288-0021 or RNieboer@communityplace.org for a complete program listing reservations, dates, times and pricing. Financial assistance is available to those who qualify and are unable to afford program fees.